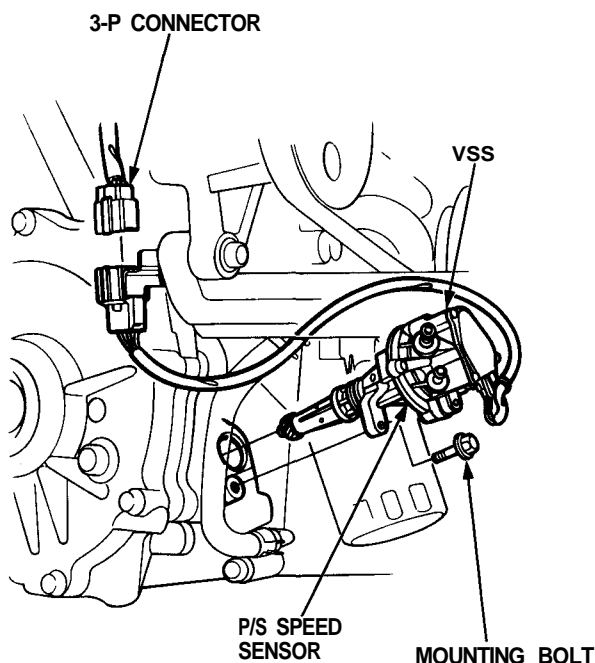


Vehicle Speed Sensor (VSS)

Replacement

1. Disconnect the 3-P connector from the vehicle speed sensor (VSS).

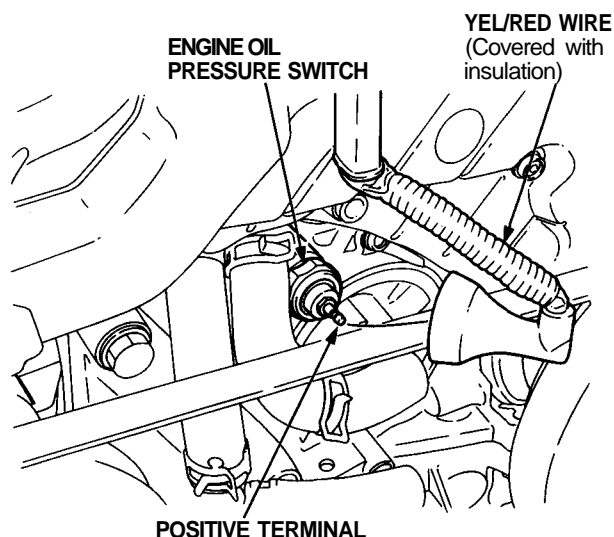


2. Remove the mounting bolt, then take out the VSS/power steering (P/S) speed sensor assembly.
3. Install in the reverse order of removal.

Engine Oil Pressure Warning System

Engine Oil Pressure Switch Test

1. Remove the YEL/RED wire from the engine oil pressure switch.



2. Check for continuity between the positive terminal and the engine (ground) with the ignition switch turned off.
 - If there is no continuity, the engine oil pressure switch is OK.
 - If there is continuity, do not replace the switch; first check other possible causes in step 3.
3. Make sure engine oil level is OK, then check engine oil pressure (see [section 8](#)).
 - If engine oil pressure is OK, replace the engine oil pressure switch.
 - If engine oil pressure is low, remove, inspect, and, if necessary, replace the oil pump (see [section 8](#)).